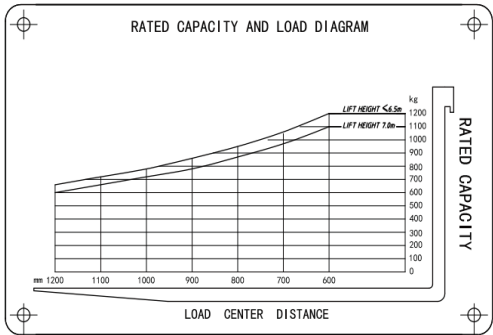
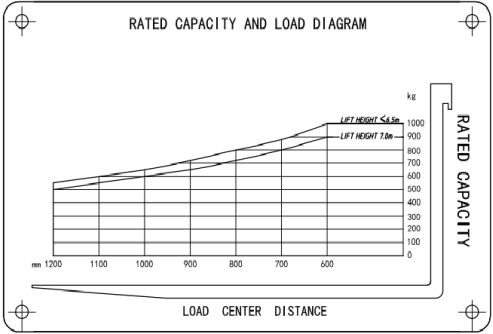
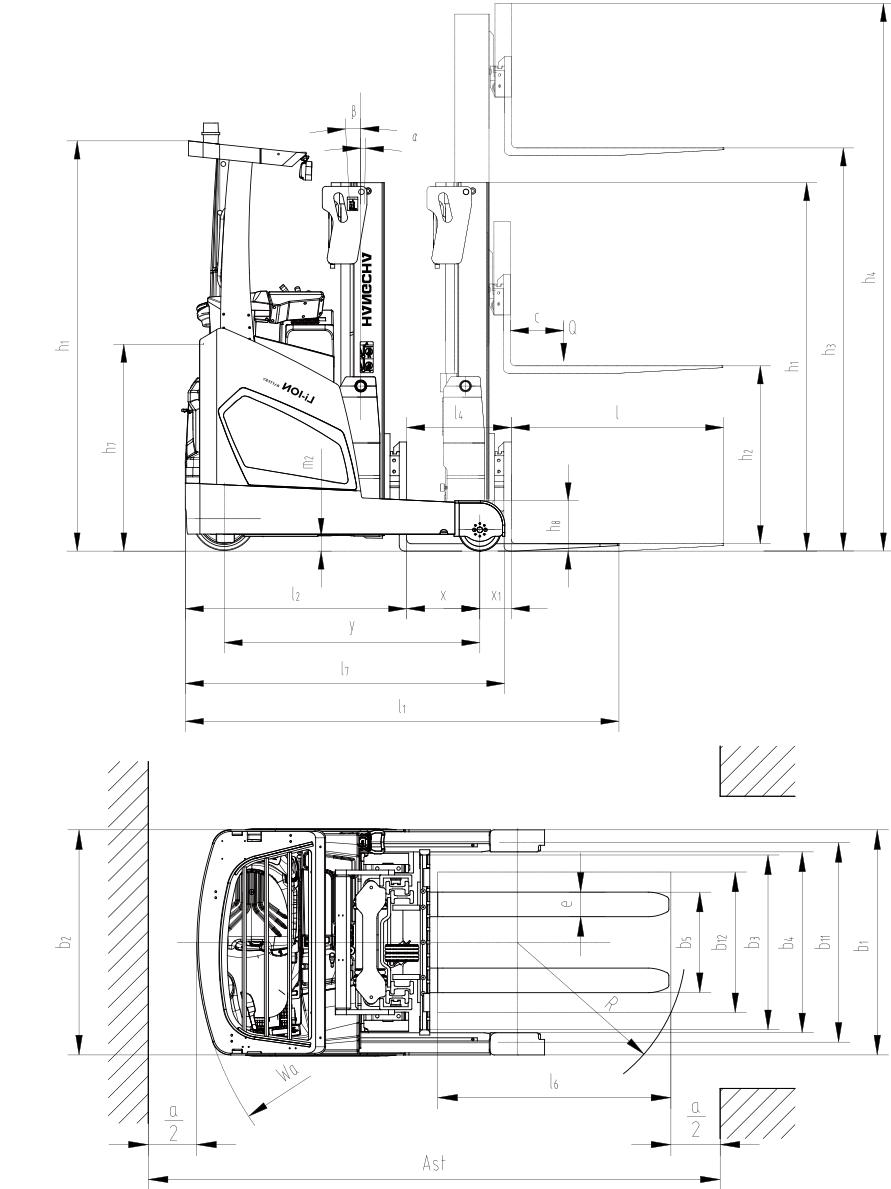


Technical data

Distinguishing mark	1.1	Manufacturer	HANGCHA GROUP CO.,LTD.	
	1.2	Manufacturer's type designation	CQD10-XC5-SI	CQD12-XC5-SI
	1.3	Drive: electric	LI-ION battery	LI-ION battery
	1.4	Operator type	Seated	Seated
	1.5	Rated capacity/rated load	Q (kg)	1200
	1.6	Load centre distance	c (mm)	600
	1.8	Load distance, centre of drive axle to fork	x (mm)	407
	1.9	Wheelbase	y (mm)	1385
	2.1	Service weight(incl.battery)	kg	2440
Tyres, chassis	3.1	Tyres: solid rubber, superelastic, pneumatic, polyurethane	PU	PU
	3.2	Tyre size, front	mm	φ 343×140
	3.3	Tyre size, rear	mm	φ 230-85
	3.5	Wheels, number front/rear (× = driven wheels)	1x/2	1x/2
	3.7	Tread, rear	b1(mm)	993
Dimensions	4.1	Tilt of mast/fork carriage forward/backward	α/β(°)	1/3
	4.2	Height, mast lowered	h1(mm)	1995
	4.3	Free lift	h2(mm)	105
	4.4	Lift	h3(mm)	3000
	4.5	Height, mast extended	h4(mm)	3975
	4.7	Height of overhead guard (cabin)	h5(mm)	2200
	4.8	Seat height relating to SIP	h7(mm)	1115
	4.10	Height of wheel arms	h8(mm)	276
	4.19	Overall length	l1(mm)	2348
	4.20	Length to face of forks	l2(mm)	1183
	4.21	Overall width	b1/b2(mm)	1120/1120
	4.22	Fork dimensions DIN ISO 2331	s / e / l1 (mm)	35×120×1150
	4.23	Fork carriage ISO 2328, class/type A, B	II A	II A
	4.24	Fork-carriage width	b3(mm)	790
	4.25	Fork spread	b5(mm)	630
	4.26	Distance between wheel arms/loading surfaces	b4(mm)	900
	4.28	Reach distance	l4(mm)	587
	4.32	Ground clearance, centre of wheelbase	m2(mm)	80
	4.34.1	Aisle width for pallets 1000 × 1200 crossways	Au1(mm)	2610
	4.34.2	Aisle width for pallets 800 x 1200 lengthways	Au2(mm)	2664
	4.35	Turning radius	W1a(mm)	1515
	4.37	Length across wheel arms	b7(mm)	1645
Performance data	5.1	Travel speed, laden/unladen	km/h	14/14
	5.2	Lift speed, laden/unladen	mm/s	490/700
	5.3	Lowering speed, lade/unladen	mm/s	500/500
	5.4	Reaching speed, laden/unladen	mm/s	200/200
	5.8	Max. gradeability, laden/unladen	%	10.0/15.0
	5.10	Service brake	Regenerative	Regenerative
		Parking brake	Electromagnetic	Electromagnetic
Electric engine	6.1	Drive motor rating S2 60 min	kW	8.1
	6.2	Lift motor rating at S3 15 %	kW	14.8
	6.3	Battery according to DIN 43531/35/36 A, B, C, no		no
		Battery voltage/nominal capacity	V/Ah	80/125
		Battery weight	kg	150



Hangcha Europe GmbH

Mariechen-Graulich-Straße 12a,
65439 Flörsheim am Main,
Germany

Administration
Tel: 0049-61453769188
E-mail: admin@hangchaeurope.com

Sales Management
Thomas Dittrich
Mob: 0049-16096548808
E-mail:thomas.dittrich@hangchaeurope.com

Technical Support
Thomas Pannke
Mob: 0049-01759284213
E-mail: thomas.pannke@hangchaeurope.com

www.hangchaeurope.com



Folgen Sie uns auf Instagram



Folgen Sie uns auf Facebook



Folgen Sie uns auf YouTube



"Hangcha Forklift" App herunterladen



HANGCHA trucks conform to the European Safety Requirements.

HANGCHA Group Co., LTD behält sich das Recht vor, Änderungen bezgl. Farbe, Spezifikationen, Ausstattung und sonstige Details, dieser Broschüre ohne Vorankündigung vorzunehmen. Fahrzeugfarben können von den Farben in dieser Brochure abweichen.

2025 VERSION / COPYRIGHT 2025/04

XC SERIES REACH TRUCK WITH LITHIUM POWER

with capacity of 1,000 to 1,200kg



The World of Hangcha
SINCE 1956



A NEW DIMENSION OF PERFORMANCE

XC SERIES REACH TRUCK WITH LITHIUM POWER

- / The XC series reach truck with lithium power fully utilize the advantages of lithium battery and achieve disruptive innovations in vehicle structure, functional configuration, performance parameters, ergonomics, and operating vision.
- / We cater for a wide range of applications whilst ensuring optimum energy efficiency. Regardless of your special requirements – whether confined spaces or lifting height reaches 7m, load capacity of up to 1,200 kg or individual customisation with various options – we have the truck you need.
- / Compact size of the lithium battery pack and breaking through the traditional structure design, makes the truck style more novel and more efficient.

MAXIMUM TRAVELLING SPEED

14km/h

MAXIMUM LOAD CAPACITY

1,200kg

MAXIMUM LIFTING SPEED

0.7m/s

MAXIMUM LIFT HEIGHT

7,000mm

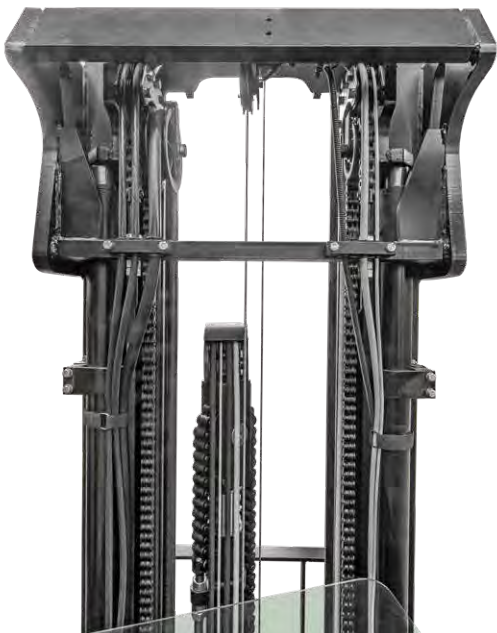
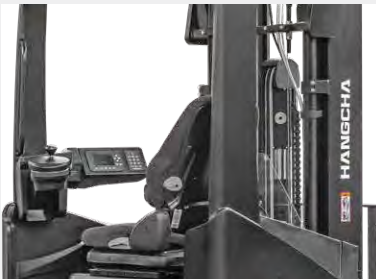


MORE VISION MORE CONTROL



The compact mast design enables operator have a wider view around the outside of the mast.

The middle cylinder is arranged eccentrically to enable the driver to have a wider view around the inside of the mast.



The improved mast structure and piping arrangement enables a broader vision for stacking operations

/ The hydraulic tubing and the wires are on both sides of the mast, overlapping with the chain, making full use of the space and reducing the line of sight.

Efficient and durable

- / CATL lithium battery is standard for all series, adopting 80V voltage system which can provides fast charging and long service life and less energy loss.
- / The special-shaped lithium battery pack design provides a large operating space in the cab and a broad view.

Lithium battery capacity		
1.0 t	Std.	80V/125Ah
1.2 t	Opt.	80V/228Ah



Charging port



Battery removal



EXCELLENT ERGONOMIC DESIGN



Steering wheel position can also be adjusted

Dashboard angle adjustment

Integral suspended seat



The pedal height can be adjusted electrically(Optional)

MULTIFUNCTIONAL INTERACTIVE COLOR-SCREEN INSTRUMENTS

The new multifunctional 4.3 inch color-screen instruments developed for the XC series reach truck have easier human-machine interfaces.



More status indication



- 1. Lifting height
 - 2. Local time
 - 3. Load weight
 - 4. Various status signs and warning signs are displayed in a queue according to actual needs
- 1. Driving mode
 - 2. Fork action
 - 3. Operating time
 - 4. Maximum allowable lifting height
- 1. Steering mode
 - 2. Battery power
 - 3. Travelling speed

More convenient shortcut button

Thanks to the integrated design of the instrument function buttons, the truck console saves a lot of physical buttons, making it more concise and efficient.

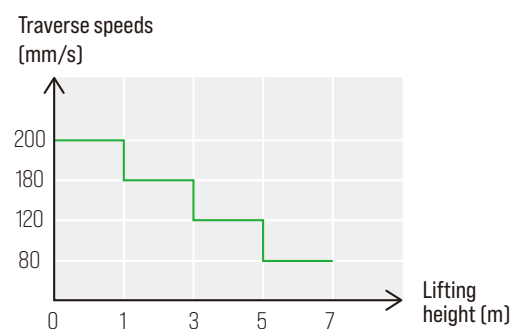


- 5. Height selection
- 6. Height limit
- 7. Lighting control
- 8. Battery removal
- 9. Optional function switching screen
- 10. Button Driving mode switching
- 11. Button Turtle speed mode

SAFETY FROM EVERY ANGLE

Drive control limit

Drive control limits the travelling speed and traverse speed as soon as the forks are raised. This increases the safety when manoeuvring with a raised pallet in front of the storage rack, while still ensuring more sensitive manoeuvring during the work cycle.



Note: The above table is only for 1.0/1.2t, the parameters of other models are not the same.

EASY MAINTENANCE

The battery pack can be replaced quickly. The driver can unlock and remove the battery while sitting on his seat.

Remove battery pack step



The seat can be turned open at a large angle, which is convenient for maintenance work.



Battery lock with creep speed interlock

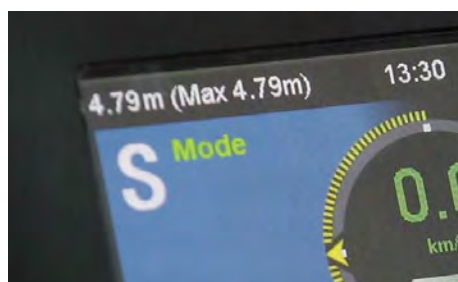
Installed on the battery latch in the motor compartment. Monitors the locking of the battery pack. If the battery pack is not retracted or not locked, travel is restricted to creep speed.





Height selection

Multiple heights can be pre-set on the instrument. After the function is enabled, when the fork is about to be lifted to the preset height, the lifting speed will gradually slow down and the fork will finally stop at the set height steadily.



Height limit

After this function is enabled, when the fork is lifted to a certain height, this height will be set as the maximum allowable lifting height. Afterwards, whenever the fork is about to be lifted to this height, the lifting speed will gradually slow down and the fork will steadily finally stop at this height.



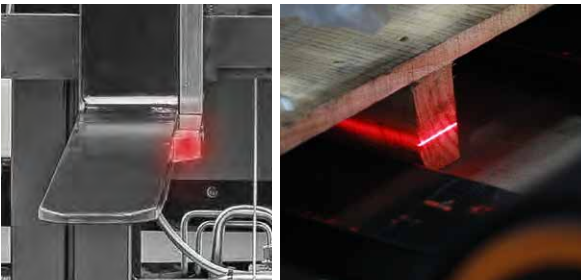
Faster, easier and safer
stacking and retrieval
operations

COMPREHENSIVELY IMPROVED FUNCTION CONFIGURATION





WE GIVE YOU ALL THE OPTIONS



Easier stacking and retrieval with positioning laser

Our positioning lasers significantly simplify the stacking and retrieval process and increase the safety for load and rack. The laser sources are integrated into the fork tips, projecting a red line on the area ahead. This allows the operator to adjust the fork more accurately to be able to drive effortlessly into the pallet.



Safety at any blind spots with Floor Spot

Floor Spot projects a blue dot on the floor around the truck. Especially at blind intersections or at the end of rack aisles, the Floor Spot alerts an approaching truck in time to respond.



Easy access

Easy access protects the reach truck against unauthorised use. Authorisation management is directly controlled via the truck's display. Customised to your requirements and company size – you can choose between the key(Std.), PIN code and transponder.



100% clear view thanks to panorama roof panel

Maximum visibility: The panorama roof panel without cross beams provides maximum visibility of the goods and forks.



Stacking and retrieval via video monitoring

Our video camera allows for the precise and quick access of extremely high locations. The position of the camera on the forks enables operators to efficiently and reliably control stacking and retrieval operations from their seating position/viewpoint. They no longer have to look up, which noticeably reduces the strain on their shoulders and neck. Also, information on the pallets is easily visible, even at great heights.

Features

NO.	System	Features	CQD10/12-XC5-SI
1	Control	Control with a mechanical control lever	●
2		Height display	○ [Only for triplex mast, excluding the free lift range]
3		Height selection	○ [Only for triplex mast, excluding the free lift range]
4		Height limit	○ [Only for triplex mast, excluding the free lift range]
5		Mast reach damping system	●
6		Soft landing system	●
7		Lifting damping system	●
8		Drive control limit	●
9		Battery lock with creep speed interlock	●
10		Travelling speed control at corner	●
11		180° steering mode	●
12		360° steering mode	○
13	Transmission system	ZF transmission	○
14	Electronic accessories	USB power socket	●
15		Fork positioning laser	○
16		Video monitoring	○
17		Keyed start	●
18		Start with a PIN code or by a card	○
19		Beep	○
20		Operating light (in the direction of the fork)	●
21		Operating light (in the reverse direction of the fork)	○
22	Ergonomic design	Alarm light	●
23		Blue light	○
24		Three-sided one line laser projection light	○
25		Electrical adjustment of pedal height	○
26	Fault Diagnosis	Adjustable steering wheel	●
27		Instrument angle adjustment	●
28	Seat	Suctioned oil filter clogging alarm	○
29		Backflow oil filter clogging alarm	○
30	Other	Sequential Seat Belt Interlock System	●
31		BFB-3 suspension seat	●
32	Other	MSG65/522 suspension seat	○
33		Panorama roof	○
34		PVC ceiling	○
35		Curved rearview mirror	○
36		Left and right rear view mirrors	○
37		Cold storage	○
38		Load backrest	●
39		Fire extinguisher	○
40		Electric fan	○
41		OPS system	●

Note: ● Standard; ○ Optional

1.0/1.2t Mast Specification

Type	Lifting height h ₃ mm	Mast lowered h ₁ mm	Mast extended h ₄ mm	Free lifting height h ₂ mm	Tilting range α/β (*)
Wide view duplex mast	2700	1975	3675	105	1/3
	3000	2125	3975	105	1/3
	3500	2375	4475	105	1/3
	4000	2725	4975	105	1/3
	4500	2975	5475	105	1/3
	5000	3225	5975	105	1/3
Full free triplex mast	4000	2030	4965	1065	1/3
	4500	2160	5465	1195	1/3
	5000	2300	5965	1335	1/3
	5500	2450	6465	1485	1/3
	6000	2635	6965	1670	1/3
	6500	2800	7465	1835	1/3
	7000	3000	7965	2035	1/3